



# integra optics

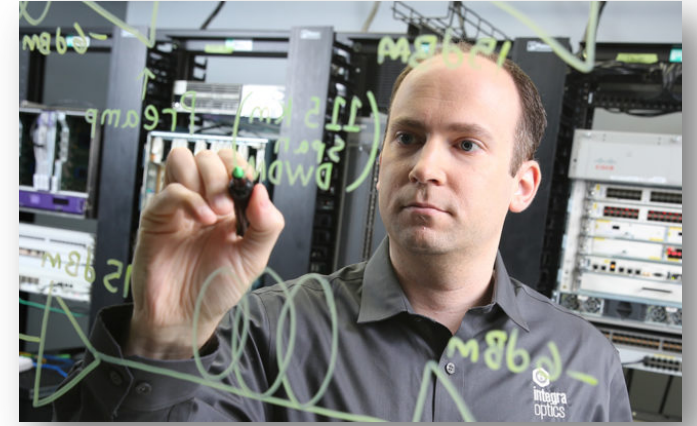
the most trusted name in uptime

We understand that end users expect their internet and phones to work **100% of the time**. That's why Integra Optics is **100% focused on uptime**. Our mission is to ensure you **turn up services faster**, build out the fiber networks you need to be competitive, and keep them **up and running**.

# The Integra Story

# 100% Focused on Uptime

- ① A vision of more reliable uptime
- ① Engineering-driven culture headed by CEO and Founder Dave Prescott, former Navy nuclear engineer
- ① Veteran-owned business run with military discipline by a 25 percent veteran workforce
- ① Serve provider and enterprise space, both domestically and internationally



# Why Integra

# Our Guiding Principles



**100%  
INTER-  
OPERABLE**



**33X  
MORE  
RELIABLE**



**AVAILABLE  
ON-  
DEMAND**

# Interoperability

100%

interoperable 

With OEM platform hardware

How do you define interoperability?

Recoding capabilities



# Reliability

33x 

more reliable

than OEM and third  
third party generics





# Availability

\$4 to \$41

billions



in five years



\$20,000,000

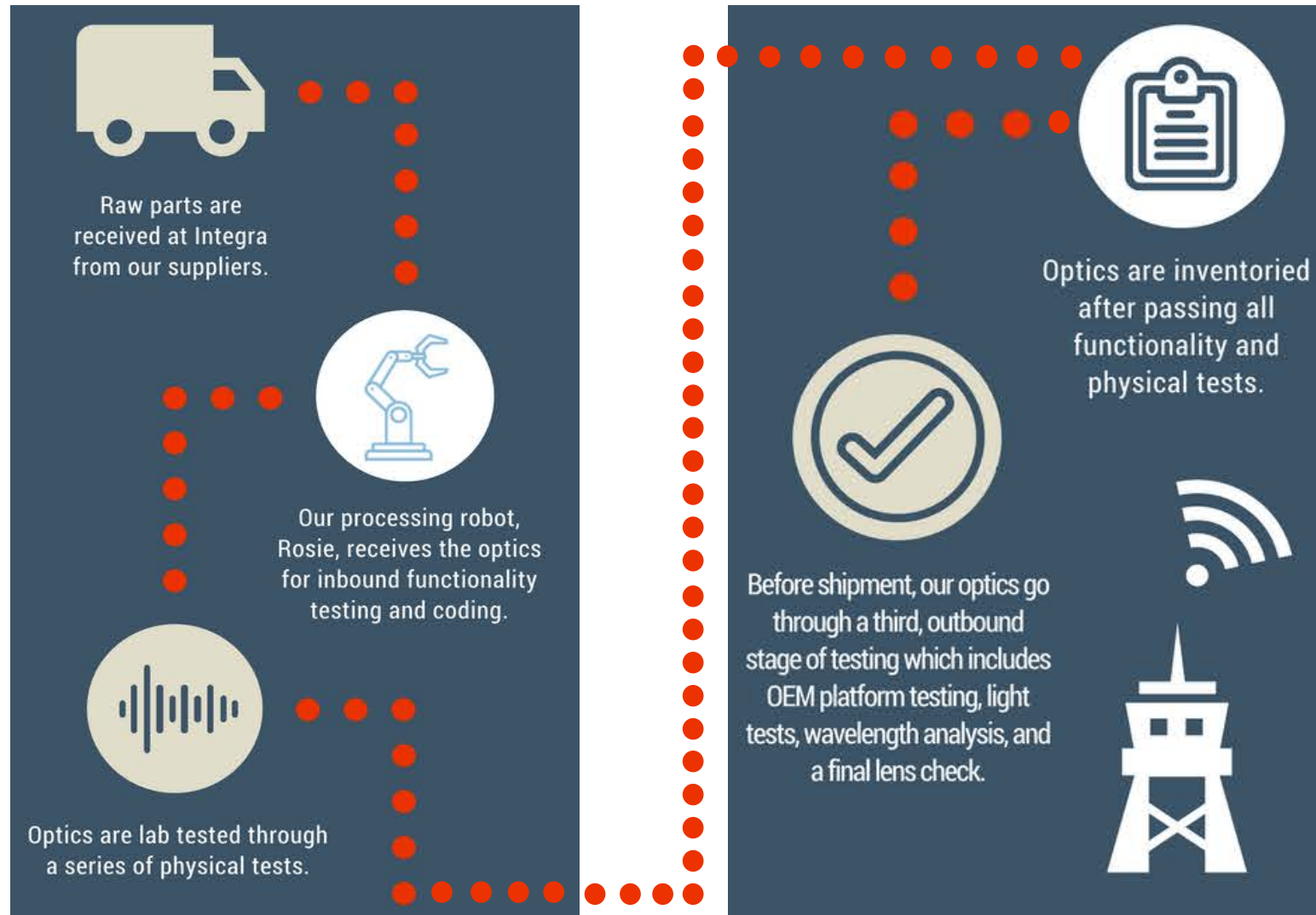
in inventory

# Certified and Scalable Process

- ① US-based manufacturing facility
- ① ISO 9001 Certified
- ① Accurate in-house coding and testing using high speed robotics
- ① Automated shipping and inventory management control systems



# Inbound/Outbound Testing



# The Value of Quality Optics

Typical Optics Provider (2% Annual Failure Rate)	
Towers	40,000
Quantity of SFPs/Tower	18
Total SFPs (Towers x Quant)	720,000
Annual failure rate	2%
Optics failures/year (Total SFPs x fail rate)	14,000
Number of truck rolls to service	14,000
Cost/truck roll	\$1,700
Annual cost of truck rolls to support optics failures	\$24,480,000

Integra Optics (.001% Annual Failure Rate)	
Towers	40,000
Quantity of SFPs/Tower	18
Total SFPs (Towers x Quant)	720,000
Annual failure rate	.001%
Optics failures/year (Total SFPs x fail rate)	7
Number of truck rolls to service	7
Cost/truck roll	\$1,700
Annual cost of truck rolls to support optics failures	\$11,900

**DIFFERENCE = \$24M+**

That's \$\$ you could be spending building out networks faster

# Engineering and Sales Support

- ① Remote and on-site engineering support 24/7
- ① Deep bench of customer-facing systems engineers to help develop and validate customer scenarios and requirements
- ① Experienced engineers to assist in proof of concept, testing, and technical support
- ① Knowledgeable customer support team to assist with expedited and proof of delivery and timely RMA processing

# Product Overview

# Our Products

## Meters

- CWDM/DWDM Optical Analyzers
- PON and Optical Power Meters
- OTDR

## Transceivers

- SFP/SFP+, XFP, CSFP, QSFP/QSFP+, GPON, CFP/CFP2/CFP4, Tunables, Direct Attach, BiDis

100% interoperable with more than 50 OEM platforms including Cisco, Juniper, Arista, HP, Nokia, Fujitsu and more

## Passives

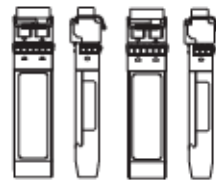
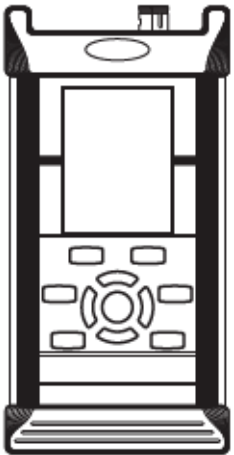
- Mux/DeMux
- PLC Splitters
- Outside Plant Cassette

## Fiber Jumpers

- Multi-Mode
- Single-Mode
- MPO Cables

## Uptime Tools

- Smart Coder
- Uptime Kits
- Portable Scope & Cleaning Kits
- Mini Visual Fault Locator



# Integra's Uptime Kit

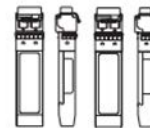
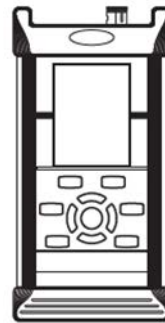
Identify, diagnose, and correct issues on the spot. Originating from customer demand, Integra's Uptime Kit is a “grab and go” solution for when there's an outage or you're in a bind. Select from three case sizes which can have a Smart Coder, a meter, and a combination of transceivers to complete this field-ready customized kit.

## Applications

- ⬆ Headend/CO
- ⬆ Field Technicians

## Features

- ⬆ Waterproof, crushproof, dust resistant case
- ⬆ Customizable
- ⬆ Included products can consist of Smart Coder, meter(s), jumpers, cleaning supplies, and a variety of transceivers





# You're In Good Company

## Core

wave

Consolidated  
communications

cox

verizon

Hawaiian Telcom

comporium

Sprint

Charter

DeepBlue

A Passion for Wi-Fi

Confidential & Proprietary

WOW!

## International



BRA A  
INTERNET EM TODO LUGAR

fibrenoire

NEC

SKY TEL  
Telecomunicaciones

use  
TELECOM

## Enterprise

Tech Data

SYNNEX  
CORPORATION

Power  
& Tel

ARROW  
ARROW ELECTRONICS, INC.

integra optics  
the most trusted name in uptime

# What Our Customers Say

“..We have seen **from the testing results of your optics that their quality is excellent.** Matter of fact, our testing went smoothly without any warnings or errors...I am convinced that Integra **exemplifies quality, agility to deliver and professionalism.**”

Senior Network Architect  
Bell

“...We (Wave) have done extensive research over the years and have found Integra's products are high quality and **meet if not exceed OEM specifications.**”

Senior Network Technician  
Wave Broadband

“Thank you for saving me from an incident created by another optics vendor... I have discovered that **what initially looks like a good deal is not the entire price.**”

Network Administrator  
Jaguar Communications

“...Integra Optics understands and supports smaller companies like ours; **without their help, we couldn't compete against the big guys.** Integra Optics engineers have some of the **best response times you can ask for;** they have bailed us out of a jam more than once.”

Network Operations Manager  
Noel Communications

# Discussion and Next Steps